

# Overfill Prevention Valve

## The Guardian A1100

### Materials Description

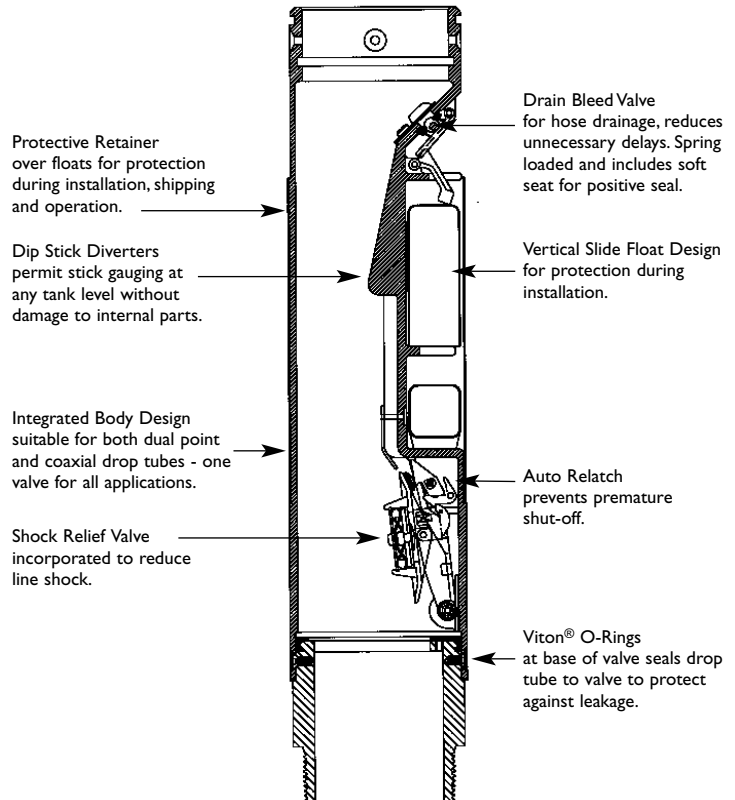
|         |          |
|---------|----------|
| Body:   | Aluminum |
| Floats: | HDPE     |
| Seals:  | Viton®   |

### Specifications

|           |          |
|-----------|----------|
| Weight:   | 4.3 lbs. |
| Diameter: | 3.76"    |
| Length:   | 18.0"    |

### Approvals

CARB  
ULC  
City of New York  
City of San Diego



The Emco Wheaton A1100 is a two stage overfill prevention valve for use in both dual point and coaxial drop tubes. The A1100 is easily installed in a new or existing drop tube assembly for economical compliance with EPA regulations.

Unlike competitive items, the A1100 features an internal float design that eliminates any chance of the floats getting caught on tank walls or the riser pipe. This design also prevents float damage during installation.

Stick gauging is never a problem due to the Emco Wheaton designed stick diverter and automatic spring loaded poppet that retracts from the flow path when not in operation.

The drain bleed valve located at the top of the Guardian reduces hose drain time, helping to eliminate unnecessary delivery delays.

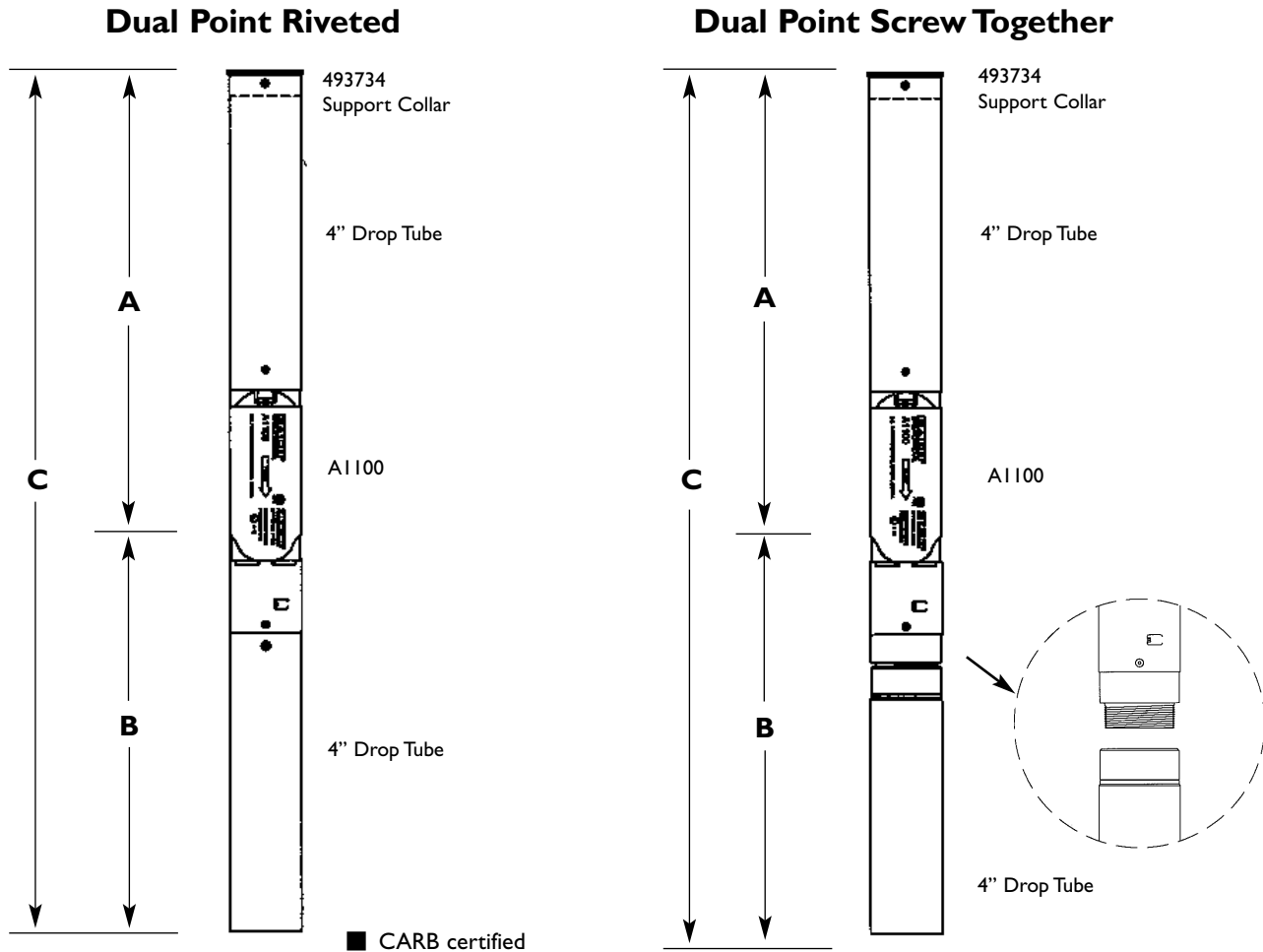
Viton® seals are used throughout the A1100.

The A1100 is compatible with all standard fuels. Special variants are available for most bulk chemical applications.

Viton® is a registered trademark of Dupont Dow Elastomers.

# Overfill Prevention Valve

## A1100 Guardian Overfill Prevention Valve Systems Stage I Vapor Recovery



OVERFILL PREVENTION  
SPILL CONTAINMENT

| Model No.  | Description            | Upper Length A | Lower Length B | Overall Length C | Maximum Burial Depth | Nominal Tank Dia. | Weight    |
|------------|------------------------|----------------|----------------|------------------|----------------------|-------------------|-----------|
| A1100-010  | Valve Only             | N/A            | N/A            | N/A              | N/A                  | N/A               | 4.3 lbs.  |
| A1100-055  | Dual Point             | 77.1"          | 88.6"          | 165.8"           | 72.1"                | 96"               | 19.2 lbs. |
| A1100-056  | Dual Point             | 89.1"          | 100.6"         | 189.8"           | 81.3"                | 120"              | 21.4 lbs. |
| A1100-057  | Dual Point             | 89.1"          | 126.6"         | 215.8"           | 78.7"                | 144"              | 24.8 lbs. |
| A1100-058  | Dual Point             | 127.1"         | 126.6"         | 253.8"           | 116.7"               | 144"              | 28.1 lbs. |
| A1100-055S | Dual Pt Screw Together | 77.1"          | 91.8"          | 168.9"           | 72.1"                | 96"               | 21.5 lbs. |
| A1100-056S | Dual Pt Screw Together | 89.1"          | 103.8"         | 192.9"           | 81.3"                | 120"              | 23.7 lbs. |
| A1100-057S | Dual Pt Screw Together | 89.1"          | 129.8"         | 218.9"           | 78.7"                | 144"              | 27.1 lbs. |
| A1100-058S | Dual Pt Screw Together | 127.1"         | 129.8"         | 256.9"           | 116.7"               | 144"              | 30.4 lbs. |

All OPV systems listed above can be ordered as a package which includes an A0097-005 Tight Fill Cap and an A0030-014 Tight Fill Adapter. To order, place a P at the end of the variant number. (Example: A1100-055P)

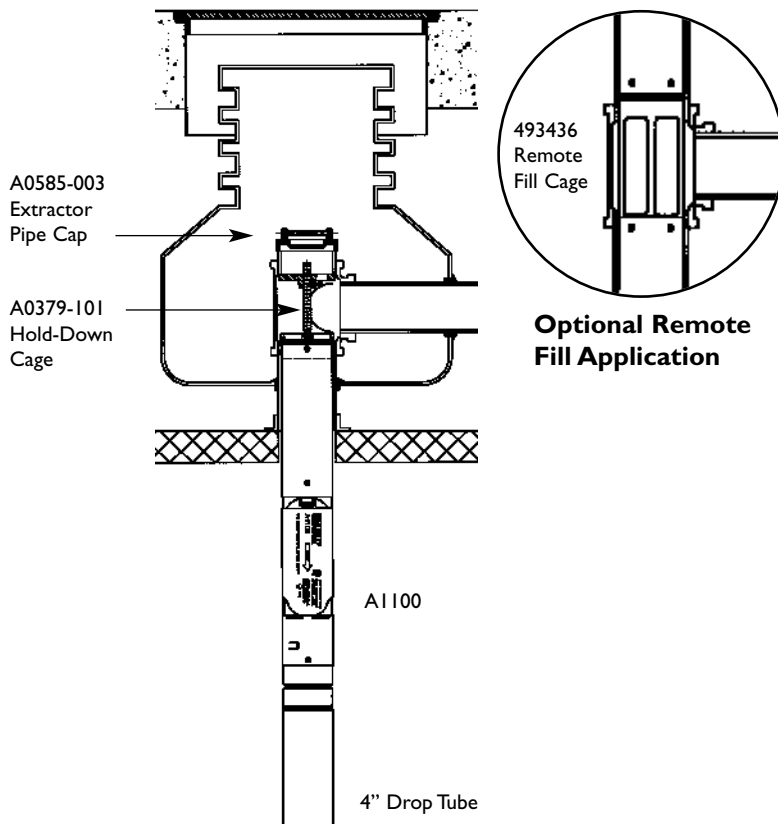
**Custom lengths available:** Please contact our customer service department.

Lengths A and B are measured from the shut-off point (flapper). Maximum burial depth assumes 95% shut-off and 6" clearance between top of drop tube and inside bottom of containment manhole lid.

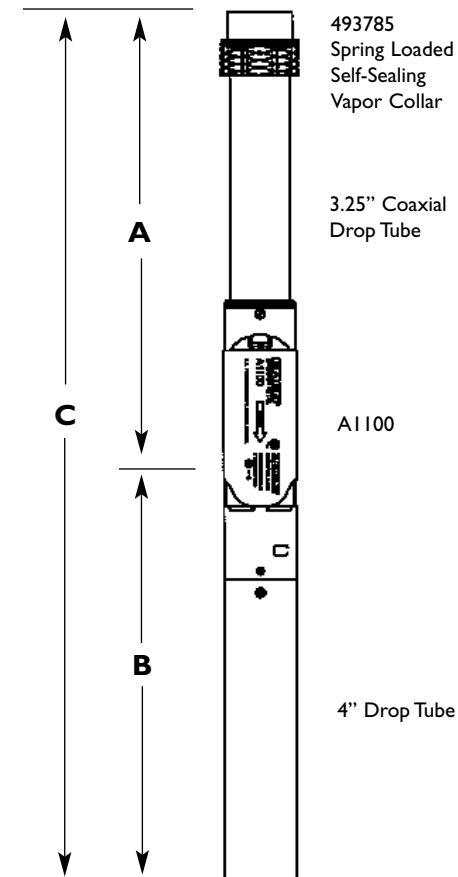
# Overfill Prevention Valve

## AI100 Guardian Overfill Prevention Valve Systems

### Conventional Screw Together with Hold-Down Cage Remote Fill Application



### Coaxial Stage I Vapor Recovery Self-Sealing



| Model No.   | Description                   | Upper Length A | Lower Length B | Overall Length C | Maximum Burial Depth | Nominal Tank Diameter | Weight    |
|-------------|-------------------------------|----------------|----------------|------------------|----------------------|-----------------------|-----------|
| AI100-010   | Valve Only                    | N/A            | N/A            | N/A              | N/A                  | N/A                   | 4.3 lbs.  |
| AI100-054SC | Dual Pt Screw Together w/Cage | 54.1"          | 109.8"         | 163.9"           | N/A                  | N/A                   | 26.0 lbs. |
| AI100-065   | Coaxial                       | 72.7"          | 88.6"          | 161.3"           | 67.6"                | 96"                   | 20.4 lbs. |
| AI100-066   | Coaxial                       | 72.7"          | 100.6"         | 173.3"           | 63.3"                | 120"                  | 22.8 lbs. |
| AI100-067   | Coaxial                       | 72.7"          | 126.6"         | 199.3"           | 60.8"                | 144"                  | 25.3 lbs. |
| AI100-085   | Coaxial Self Sealing          | 72.9"          | 88.6"          | 161.5"           | 67.6"                | 96"                   | 20.9 lbs. |
| AI100-086   | Coaxial Self Sealing          | 72.9"          | 100.6"         | 173.5"           | 63.3"                | 120"                  | 23.3 lbs. |
| AI100-087   | Coaxial Self Sealing          | 72.9"          | 126.6"         | 199.5"           | 60.8"                | 144"                  | 25.8 lbs. |

All OPV systems listed above can be ordered as a package which includes an A0097-005 Tight Fill Cap and an A0089-001 or A0096-001 Tight Fill Adapter. To order, place a P at the end of the variant number. (Example: AI100-085P)

**Custom lengths available:** Please contact our customer service department.

Lengths A and B are measured from the shut-off point (flapper). Maximum burial depth assumes 95% shut-off and 6" clearance between top of drop tube and inside bottom of containment manhole lid.